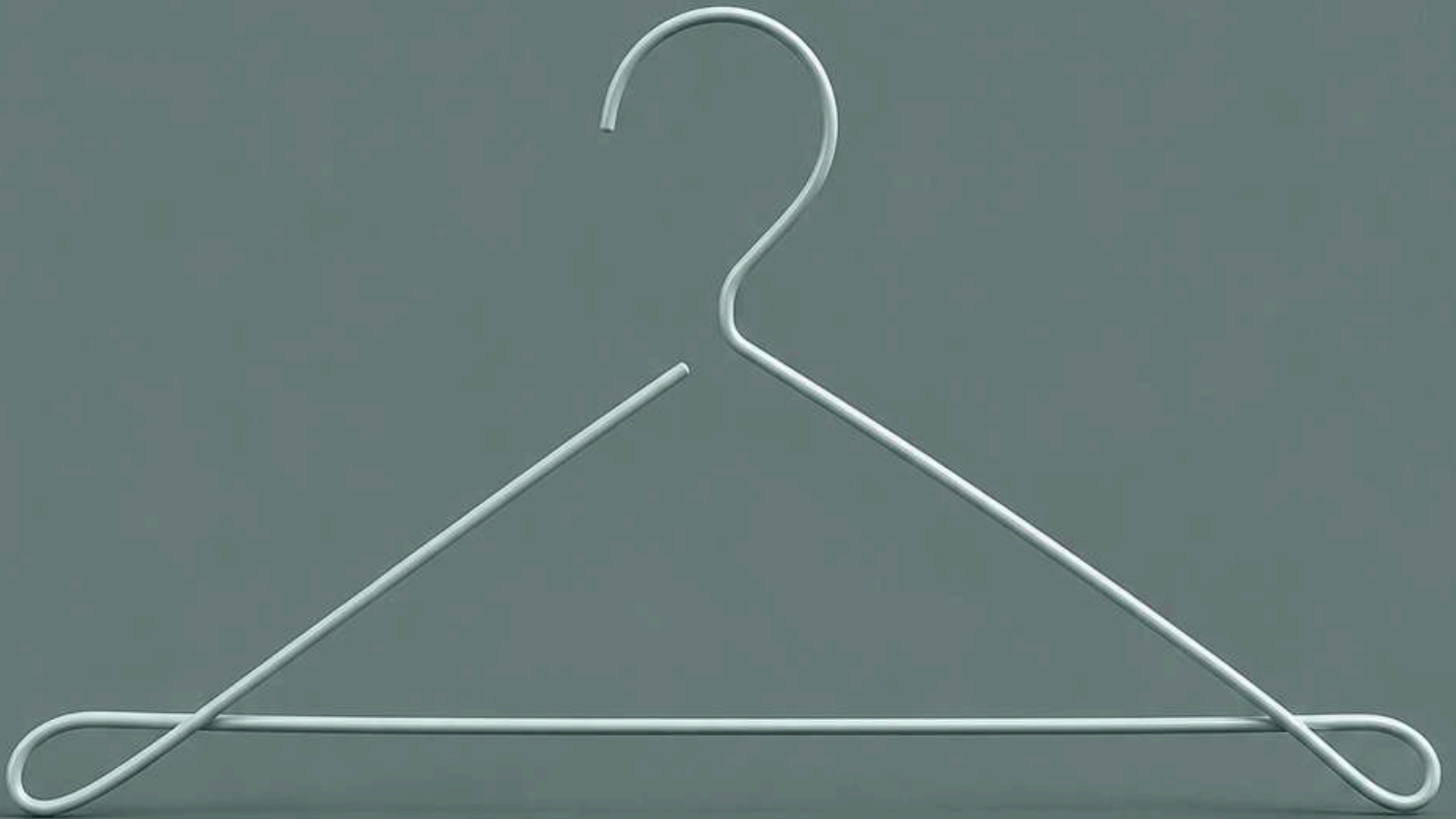


# ELWEAR



[elwear.co@gmail.com](mailto:elwear.co@gmail.com)



+62 821-4790-2621



[elwear.official](https://www.instagram.com/elwear.official)

# ABOUT US

ELWEAR is a contemporary resortwear and activewear brand inspired by the beauty of tropical islands, where elegance meets confidence in every detail. Designed for modern women who embrace bold femininity, ELWEAR combines clean aesthetics with unique silhouettes that create a strong yet effortlessly sophisticated presence.

More than just fashion, ELWEAR represents a lifestyle — confident, fearless, sensual, and elegant. Every collection is thoughtfully created to empower women to express themselves freely, whether they are enjoying a tropical getaway, attending a sunset gathering, or embracing an active and elevated daily lifestyle.

Rooted in a tropical island spirit, ELWEAR carries warm, luxurious, and refined energy through timeless designs, premium fabrics, and carefully crafted details that prioritize both beauty and comfort. Each piece is designed to move naturally with the body, allowing women to feel confident, comfortable, and effortlessly attractive in every moment.

WEAR YOUR CONFIDENCE

# THE AURA

SUMMER 2026

ELWEAR





Every woman carries her own aura—  
an energy not meant to be hidden,  
but to be felt.

The Aura was born from the belief that a woman's strength does not  
always need to be loud.

It reveals itself in the way she stands, moves, and chooses to be entirely  
herself—

without fear of judgment, without the need to justify her existence.

Within every woman, softness and strength never cancel each other out.

They coexist, empowered by intelligence and sharp intuition.

These are the elements that make women the most visually captivating  
beings,

yet with energy and capabilities that are never limited.

This collection celebrates the body as a language.

Structured yet flowing silhouettes, revealing yet controlled—  
designed to follow the natural gestures of women who are confident  
and unafraid to fully express themselves.

The Aura is not about being seen.

It is about presence.

And when a woman truly believes in herself,  
her aura will always speak first.

**Wear the form. Own the energy.**



# SOLEA TOP

A modern statement piece designed to embody bold femininity with effortless elegance. The ELWEAR Asymmetrical Linen Top features a unique one-shoulder silhouette combined with structured tailoring that beautifully enhances the body shape while maintaining comfort and sophistication.

Crafted from premium linen fabric, this top offers a breathable and lightweight feel, making it perfect for tropical weather and elevated resort styling. The asymmetric cut, delicate button details, and adjustable side tie create a refined yet distinctive look that feels both clean and luxurious.

Designed for women who want to appear confident, elegant, and effortlessly attractive.

## Details

- Premium linen material
- Asymmetrical one-shoulder design
- Adjustable side tie detail
- Front button accents
- Structured silhouette for flattering fit
- Breathable and comfortable fabric
- Elegant tropical-inspired aesthetic

## Size

S and M

## Perfect For

- Resort getaway
- Brunch
- Summer events
- Tropical vacation
- Elevated casual wear

## Color

Off-White, Black, Yellow Powder

**IDR 1.100.000**

# SOLEA TOP

OFF-WHITE



FRONT



BACK

BLACK



YELLOW POWDER



Actual product color may vary slightly due to lighting during photography, post-production editing, and individual monitor or mobile display settings.

# SOLEA TOP



Actual product color may vary slightly due to lighting during photography, post-production editing, and individual monitor or mobile display settings.

The SOLENE PANTS are designed to bring effortless elegance and comfort into one refined silhouette. Featuring a high-waisted cut with dramatic wide-leg construction, these pants create a graceful and elongated look while maintaining a relaxed tropical luxury feel.

Made from premium linen fabric, the pants are lightweight, breathable, and soft against the skin – ideal for warm-weather destinations and sophisticated everyday styling. The vertical pleated detailing adds texture and dimension, creating a unique statement while enhancing the elegant flow of the silhouette.

A timeless piece for women who embrace confidence, comfort, and understated luxury.



## SOLENE PANTS

### Details

- Premium linen material
- High-waisted fit
- Wide-leg silhouette
- Elegant pleated detailing
- Lightweight and breathable
- Relaxed yet sophisticated look
- Comfortable for all-day wear

### Size

S and M

**IDR 1.600.000**

### Perfect For

- Resort getaway
- Brunch
- Summer events
- Tropical vacation
- Elevated casual wear

### Color

Off-White, Black, Yellow Powder

# SOLENE PANTS

OFF-WHITE



FRONT



BACK

BLACK



YELLOW POWDER



Actual product color may vary slightly due to lighting during photography, post-production editing, and individual monitor or mobile display settings.

# SOLENE PANTS



Actual product color may vary slightly due to lighting during photography, post-production editing, and individual monitor or mobile display settings.

# VELORA BLAZER



A timeless tailored piece designed with effortless sophistication and modern tropical elegance. The Velora Blazer combines clean structure with a relaxed feminine silhouette, creating a bold yet refined statement for women who embrace confidence and understated luxury.

Crafted from premium linen fabric, this blazer offers a lightweight, breathable, and comfortable feel – perfect for warm tropical climates while maintaining an elevated polished look. The deep neckline, soft tailored fit, and adjustable side tie details create a unique silhouette that feels elegant, sensual, and modern at the same time.

The standout open-back detail adds a bold feminine touch, enhancing the silhouette with subtle sensuality while maintaining ELWEAR's refined and sophisticated identity. Designed to transition seamlessly from resort moments to sophisticated everyday styling, making it a versatile essential for the confident ELWEAR woman.



## Details

- Premium linen material
- Lightweight and breathable fabric
- Relaxed tailored silhouette
- Deep V neckline
- Elegant open-back detail
- Adjustable side tie details
- Elastic back waist detail for comfort fit
- Clean and elegant finish
- Comfortable for tropical weather
- Minimal yet statement design

## Size

S and M

## Perfect For

- Resort styling
- Sunset dinner
- Vacation look
- Summer occasion
- Elevated casual wear
- Sophisticated layering

## Color

Off-White, Black, Yellow Powder

**IDR 1.400.000**

# VELORA BLAZER

OFF-WHITE



FRONT



BACK

BLACK

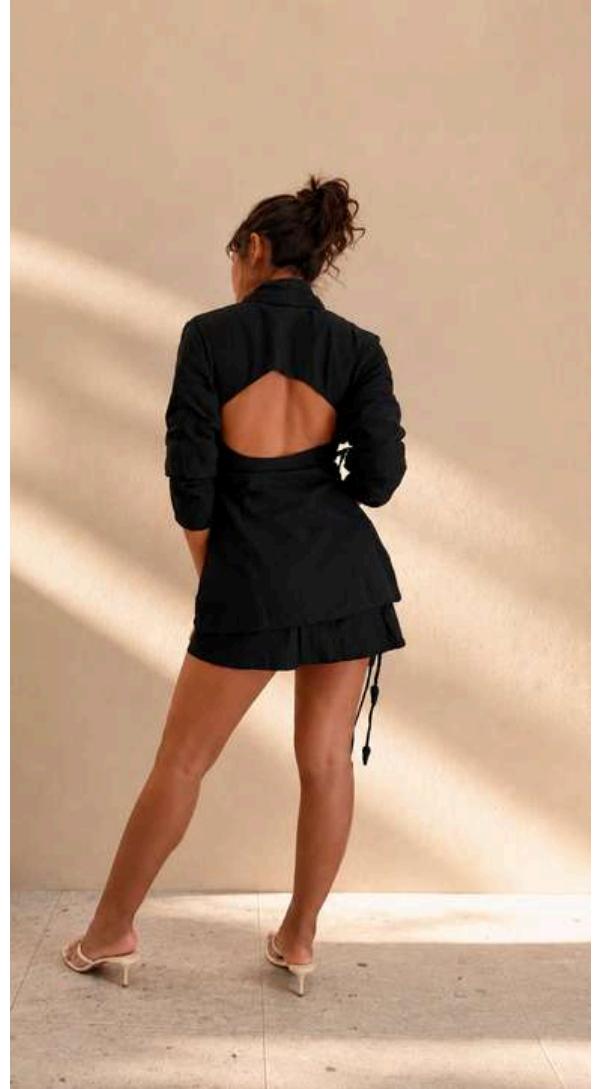


YELLOW POWDER



Actual product color may vary slightly due to lighting during photography, post-production editing, and individual monitor or mobile display settings.

# VELORA BLAZER



Actual product color may vary slightly due to lighting during photography, post-production editing, and individual monitor or mobile display settings.

# SOLARA SKORT



A refined statement piece designed to blend feminine elegance with effortless comfort. The ELWEAR Linen Skort features the sophisticated appearance of a mini skirt while offering the practicality and confidence of built-in inner shorts, allowing freedom of movement without compromising style.

Crafted from premium linen fabric, this piece feels lightweight, breathable, and comfortable for tropical weather and elevated everyday wear. The asymmetrical layered silhouette creates a clean yet distinctive look, while the adjustable side tie details adorned with delicate floral accents add a soft feminine touch inspired by tropical beauty.

Designed for women who want to feel bold, elegant, playful, and confidently effortless in every moment.

## Details

- Premium linen material
- Built-in inner shorts for comfort and secure fit
- Asymmetrical layered skort design
- Adjustable side tie details
- Decorative floral tie accents
- Lightweight and breathable fabric
- Comfortable for active movement
- Feminine yet modern silhouette
- Clean and elegant tropical aesthetic

## Size

S and M

## Perfect For

- Resort styling
- Sunset dinner
- Vacation look
- Summer occasion
- Elevated casual wear
- Sophisticated layering

## Color

Off-White, Black, Yellow Powder

**IDR 900.000**

# SOLARA SKORT

OFF-WHITE



FRONT



DETAIL

BLACK



YELLOW POWDER



Actual product color may vary slightly due to lighting during photography, post-production editing, and individual monitor or mobile display settings.

# MATCHING SET

VELORA BLAZER

SOLENE PANTS

IDR 2.700.000



# MATCHING SET

VELORA BLAZER

SOLARA SKORT

IDR 2.100.000



# MATCHING SET

SOLEA TOP

SOLENE PANTS

**IDR 2.400.000**



# MATCHING SET

SOLEA TOP

SOLARA SKORT

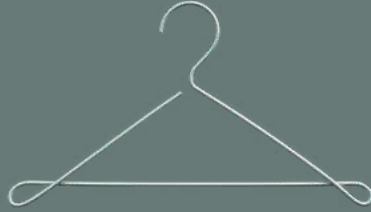
IDR 1.900.000







THE AURA  
VOL.1



# CHOOSE YOUR AURA!

**VOL.2**

**Coming Soon**